

TDS - Sæplast 160 PUR

Reusable insulated container for material handling.

Data

Dimensions (± 2%)		Size (± 2%)	
Length:	920 mm	Weight:	17 kg
Width:	710 mm	Volume:	161 L
Height:	450 mm		
		OPT. Drainholes	0-2

All buttress thread for drainholes are Ø51.2 mm

Material

External: *Linear Low Density Polyethylene (LLDPE).*

Internal: *Closed Cell Expanded Polyurethane.*

Stacking and Hoisting

Stacking:

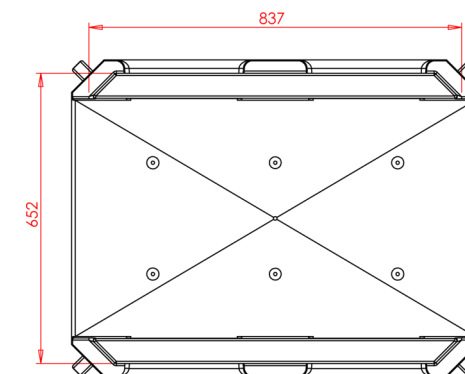
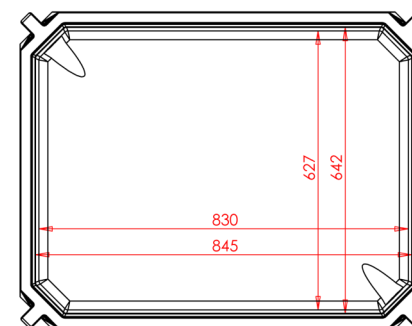
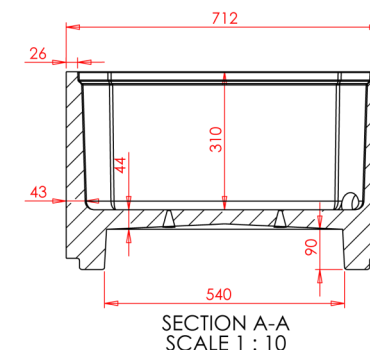
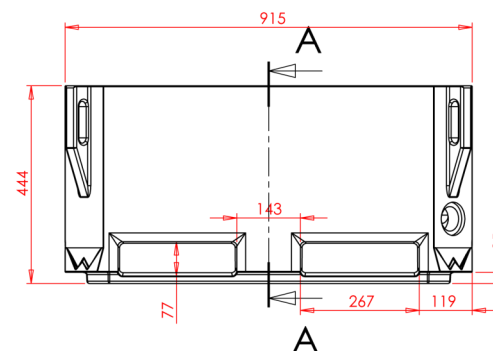
The container can be stacked, both including and excluding content.

Laterally restrained stack should never exceed a stack of three containers.

Hoisting:

Maximum weight of tub stack including tub contents during hoisting is 1800 kg, according to Icelandic standard; (ÍST110:2016.).

Disclaimer: Please advice that Sæplast can not guarantee stacking and hoisting limits for this product. Above statements are for reference purpose only.



All dimensions are in mm (± 2%)

